

Islecroft Caravan & Camping Park

Mill Street
Colliston Park
Dalbeattie

Kirkcudbrightshire
Scotland DG5 4HE

Tel:- (01556) 612236 (day) or 612645 (eve)

Mobile: 077 808 47701

Web site: www.islecroft.me.uk

email: billy@islecroft.me.uk

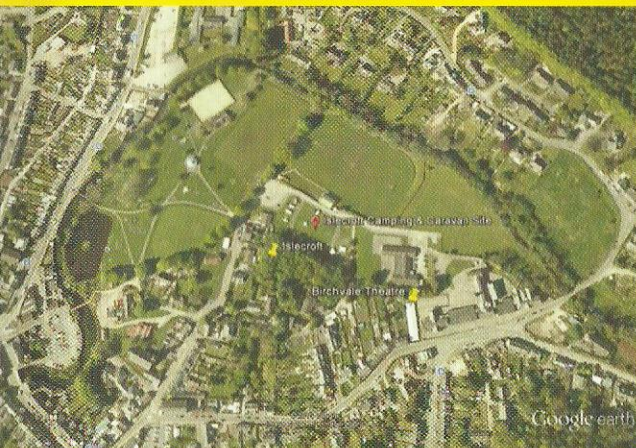
Proprietors Sheila & Billy Henderson

To find us:-

On the A711 from Dumfries. On entering

Dalbeattie, turn left at the Pheasant hotel, continue down the High street and take the first on the left into Mill street, bear left at Gowan's furniture store and carry straight on for 200 yards. The site is on the right adjacent to the stadium.

On the A745 from Castle Douglas. On entering the town, turn **right** at the Pheasant and follow as above.



7 nights for the price of 6

Islecroft Caravan & Camping Park

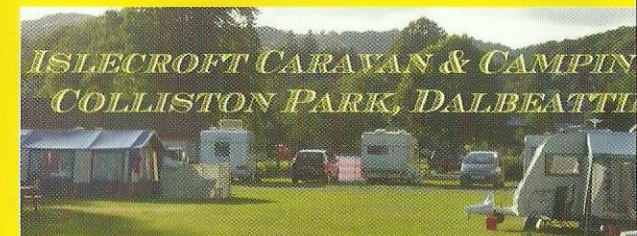


User Information

- Only grass friendly ground sheets or no ground sheets can be used with awnings. Plastic sheets and carpets must not be used.
- Barbecues can be used on site. Disposable barbecues must be supported clear of the grass.
- No ball games are permitted in the camp site.
- Dogs must be kept under close control at all times.
- Dog poo bags available from cabin.
- Showers are included in the pitch price.
- Cycle lock up available.
- Recycling facilities are available on site.

Ask about our occasional week-end sing-alongs

Requests are welcome, but not catered for.



Islecroft Caravan & Camping Park

**Mill Street
Dalbeattie DG5 4HE**



Scotland 2014